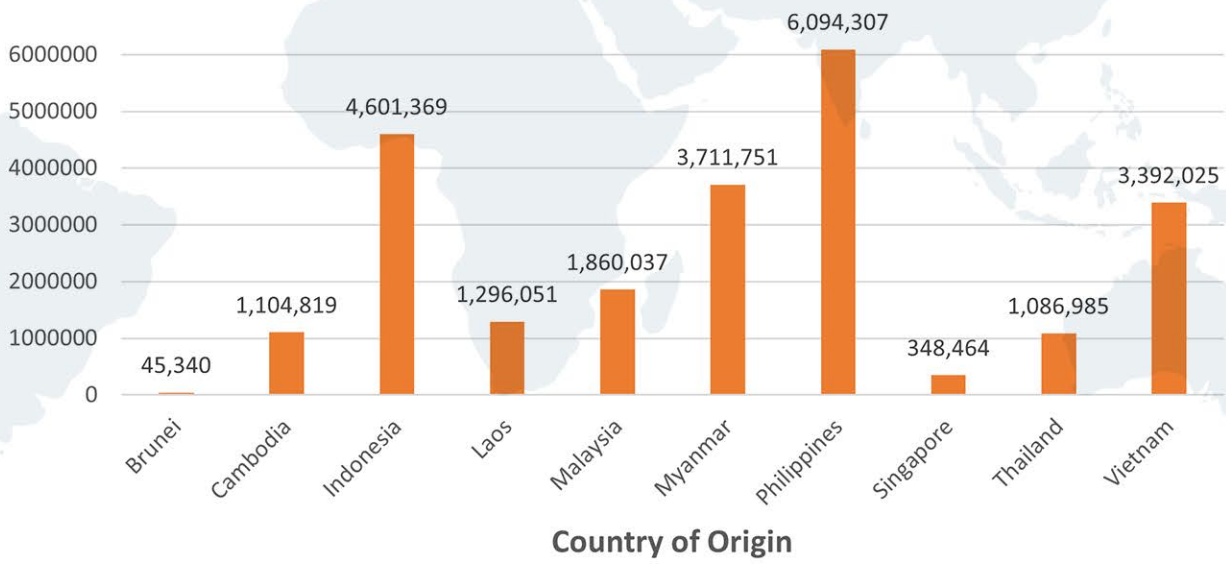


## MIGRATION

Compiled by S.Nanthini

In 2020, there were **280.6 million migrants in the world**, 23.58 million of whom are from Southeast Asia (including Timor Leste). Of the 10.6 million number of international migrants living and working in Southeast Asia, 7.09 million of migrants are from the region.

### Total International Migrants (2020)

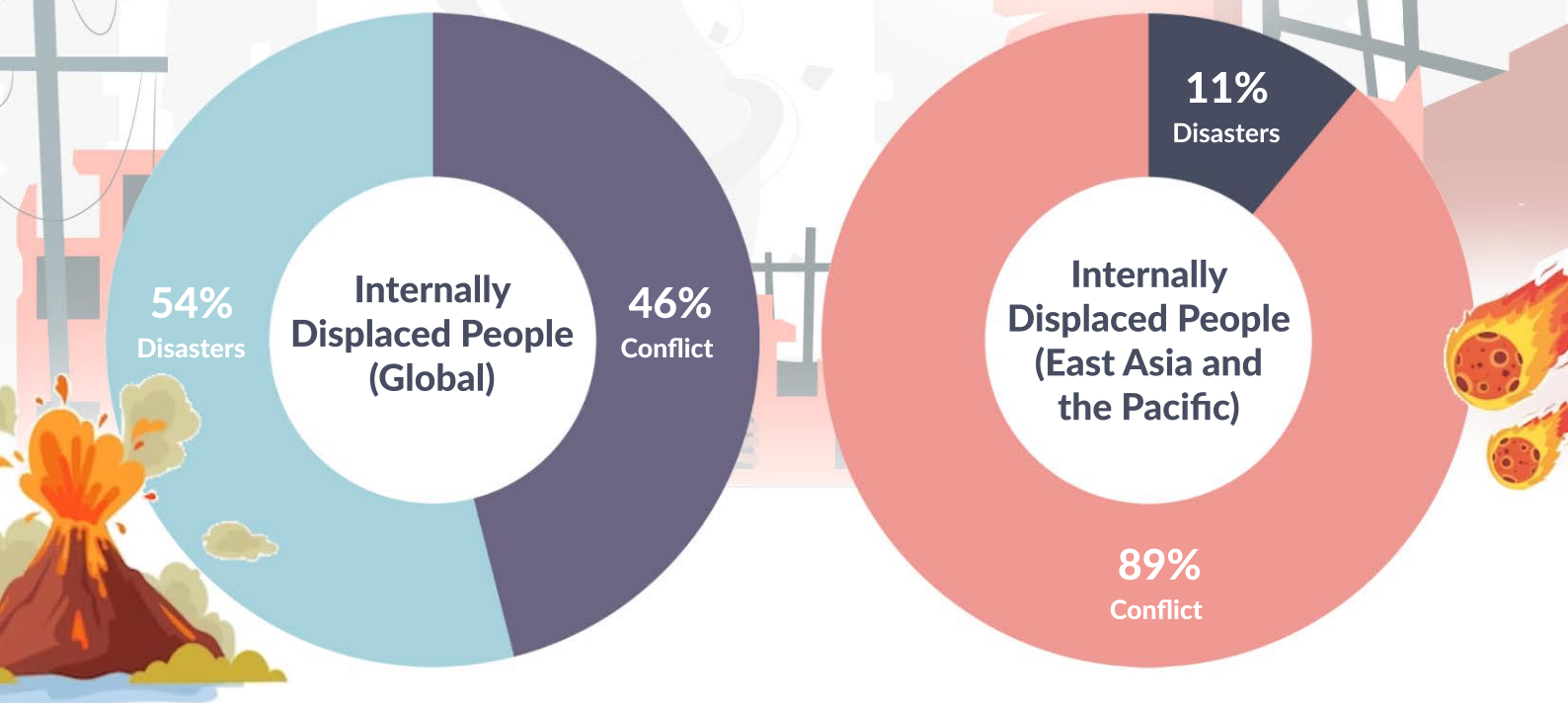


Source: Compiled from United Nations Department of Economic and Social Affairs, Population Division (2020). International Migrant Stock 2020.

### Internally Displaced Persons

In 2022 alone, approximately **60.9 million people across were internally displaced** – the highest recorded figure ever. Out of this, 32.6 million people were displaced by disasters while 28.3 million people were displaced due to conflict and violence.

Disasters triggered more than 50% of internal displacements globally in 2022. In fact, displacements due to disasters were 41% higher than the annual average for the past decade. This general increase in disaster displacements seems unlikely to slowdown in the face of increasing climate change-induced disasters. This is a particularly worrying trend.



In 2022, 11.3 million people were internally displaced in the East Asia and the Pacific. Out of this, approximately 10.1 million people were displaced due to disasters. Out of the top 5 most affected countries in the region, 4 countries (Philippines, Myanmar, Vietnam and Indonesia) belong to the Southeast Asian region.

Source: Compiled from IDMC 2023, "Global Report on Internal Displacement 2022"; IDMC, access 1 March 2024 <[https://api.internal-displacement.org/sites/default/files/publications/documents/IDMC\\_GRID\\_2023\\_Global\\_Report\\_on\\_Internal\\_Displacement\\_LR.pdf](https://api.internal-displacement.org/sites/default/files/publications/documents/IDMC_GRID_2023_Global_Report_on_Internal_Displacement_LR.pdf)>. United Nations Department of Economic and Social Affairs, Population Division (2020). International Migrant Stock 2020.

