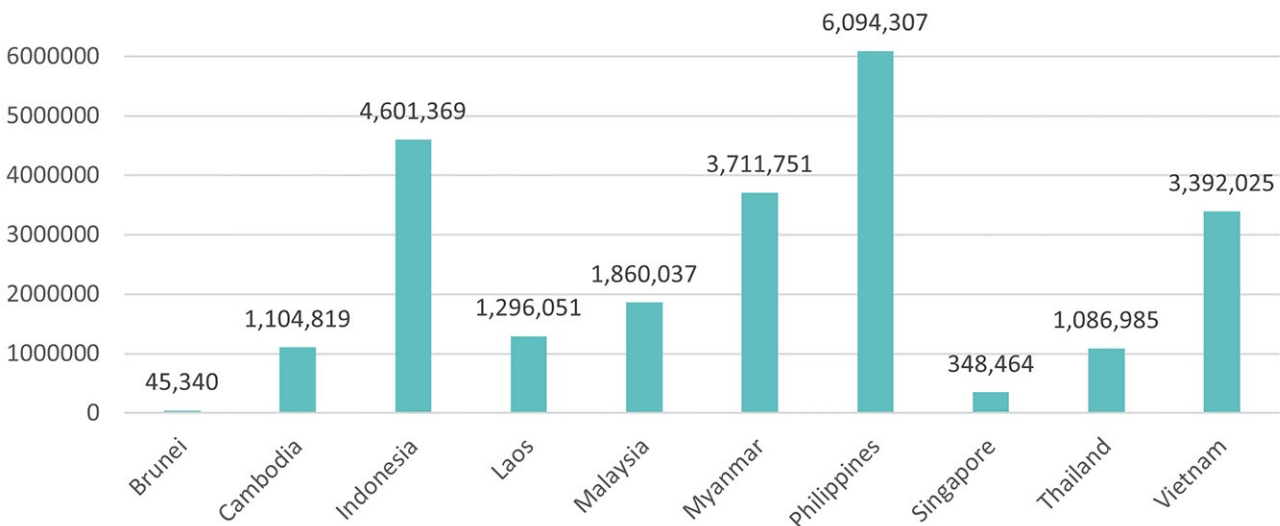


MIGRATION

Compiled by S.Nanthini

In 2020, there were **280.6 million** migrants in the world, 23.58 million of whom are from Southeast Asia (including Timor Leste). Of the 10.6 million number of international migrants living and working in Southeast Asia, 7.09 million of migrants are from the region.

Total International Migrants (2020)

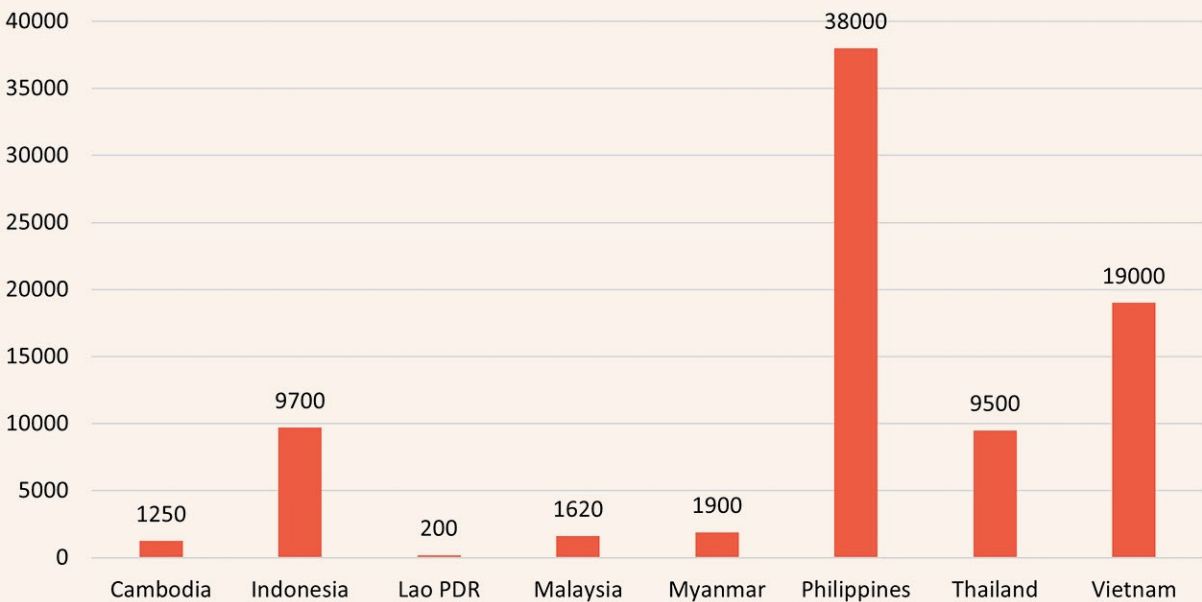


Source: Author, data compiled from United Nations Department of Economic and Social Affairs, Population Division (2020). International Migrant Stock 2020.

Remittances

Total global international remittances has continued to increase - other than a slightly drop in 2020, likely due to the results of COVID-19 – beating pre-pandemic levels to reach an estimated US\$ 794.06 billion as of December 2022. In Southeast Asia, Philippines continues to be the top recipient of remittances, and is also estimated to be 4th among the 5 top recipient of remittances globally.

Estimate of Remittance Inflows (millions of US\$) as of Dec 2022

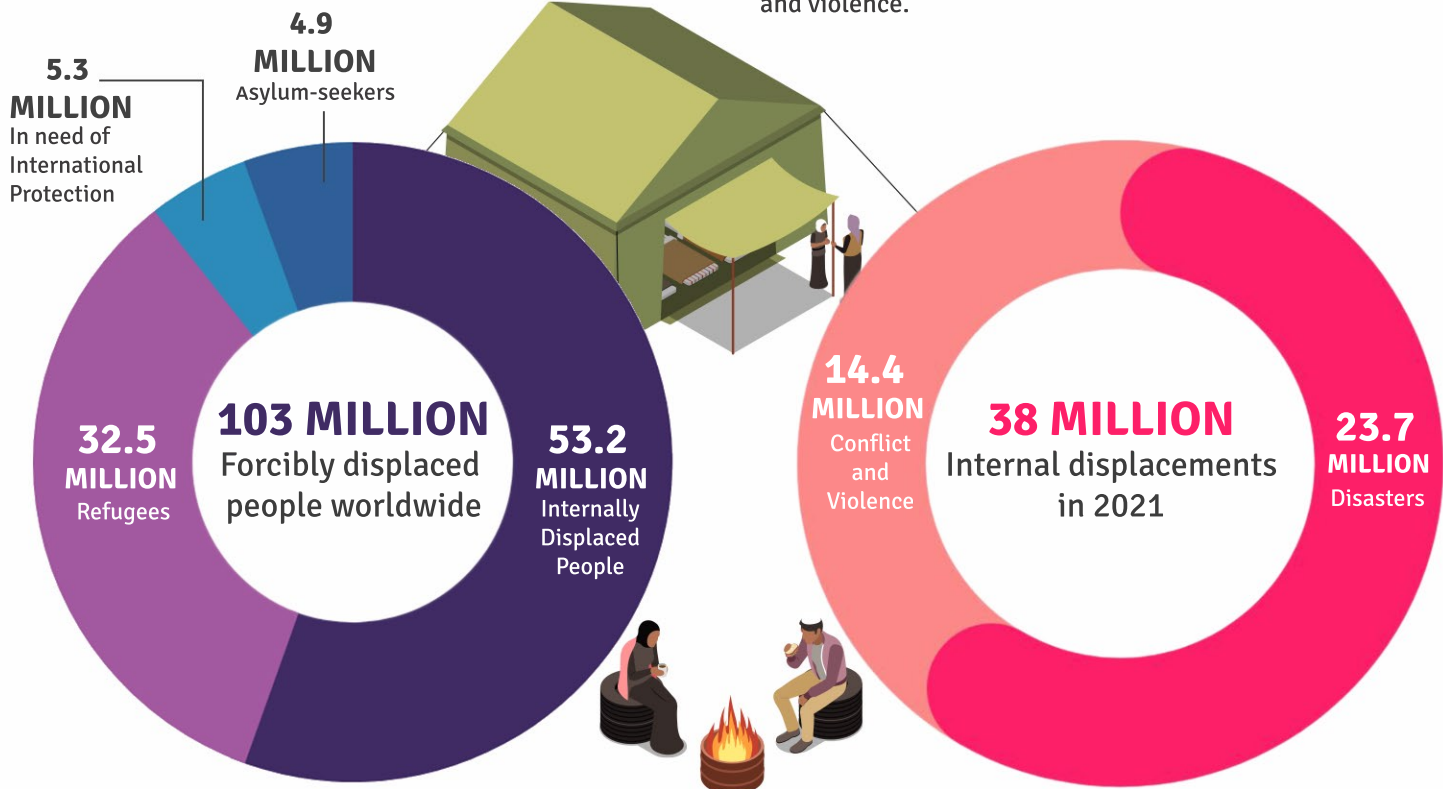


Source: Author, data compiled from Dilip Ratha et al, "Migration and Development Brief 37: Remittances Brave Global Headwinds. Special Focus: Climate Migration." KNOMAD-World Bank, 2022 Accessed 17 March [License: Creative Commons Attribution CC BY 3.0 IGO.]

Refugees and Asylum Seekers

As of mid-2022, there is an estimated **103 million** people who have been forcibly displaced worldwide. Out of this total, 32.5 million people are refugees with another 4.9 million people who are considered asylum-seekers.

According to the IDMC, over **38 million** people across 141 countries and territories were internally displaced in 2021. Out of this, 23.7 million people were displaced by disasters while 14.4 million people had been displaced due to conflict and violence.



Source: Author, data compiled from UNHCR, "Refugee Statistics", UNHCR, 2022, access 17 March 2023  
<https://www.unhcr.org/refugee-statistics>

Source: Author, data compiled from IDMC, "Global Report on Internal Displacement 2022", IDMC, 2022, access 17 March 2023  
[https://www.internal-displacement.org/sites/default/files/publications/documents/IDMC\\_GRID\\_2022\\_LR.pdf](https://www.internal-displacement.org/sites/default/files/publications/documents/IDMC_GRID_2022_LR.pdf)

Disasters triggered more than **60%** of internal displacements globally in 2021. With disasters potentially increasing in frequency and intensity as a result of climate change, it is likely that displacement are likely to continue to increase.

Disasters in the Asia-Pacific

The Asia-Pacific region continues to be the region most affected by disaster displacement worldwide with **765 disaster** events reported and **19 million people** internally displaced in 2021 alone . Southeast Asia accounts for nearly half of these disasters with 345 events reported, mostly as a result of storms and flooding.

Source: Author, data compiled from IDMC, "Disaster Displacement in Asia and the Pacific", IDMC, 2022, access 17 March 2023,  
<https://www.internal-displacement.org/disaster-displacement-in-asia-and-the-pacific-2022>

