

World Agricultural Forum  
Conference  
6-7 July 2017  
Singapore

Vertical Vegetable Farming  
The Singapore Experience

Dr Ngiam Tong Tau



Orchards in Orchard Rd



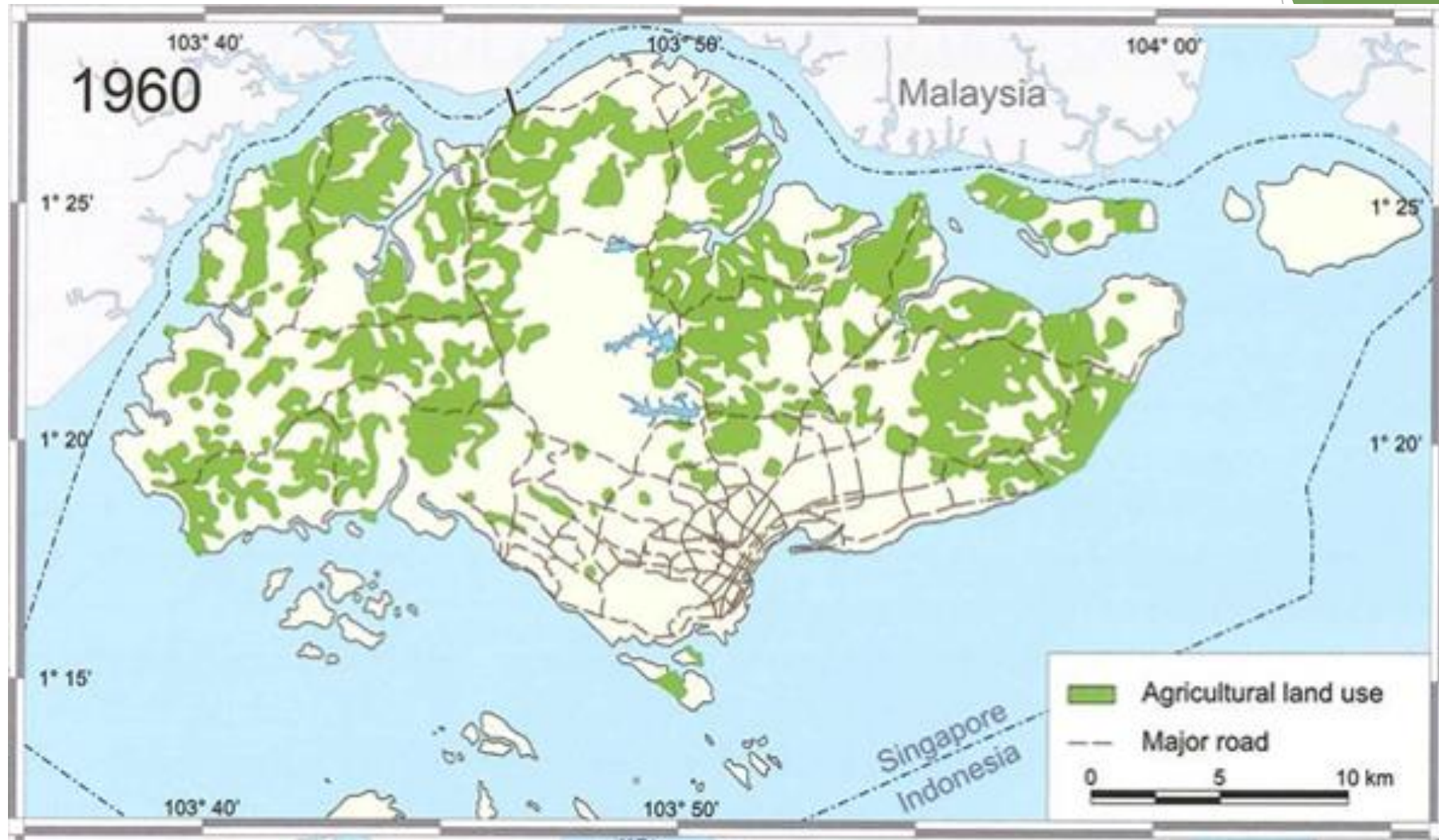
CHINESE FARMERS 1900





Vegetable farm 1950's

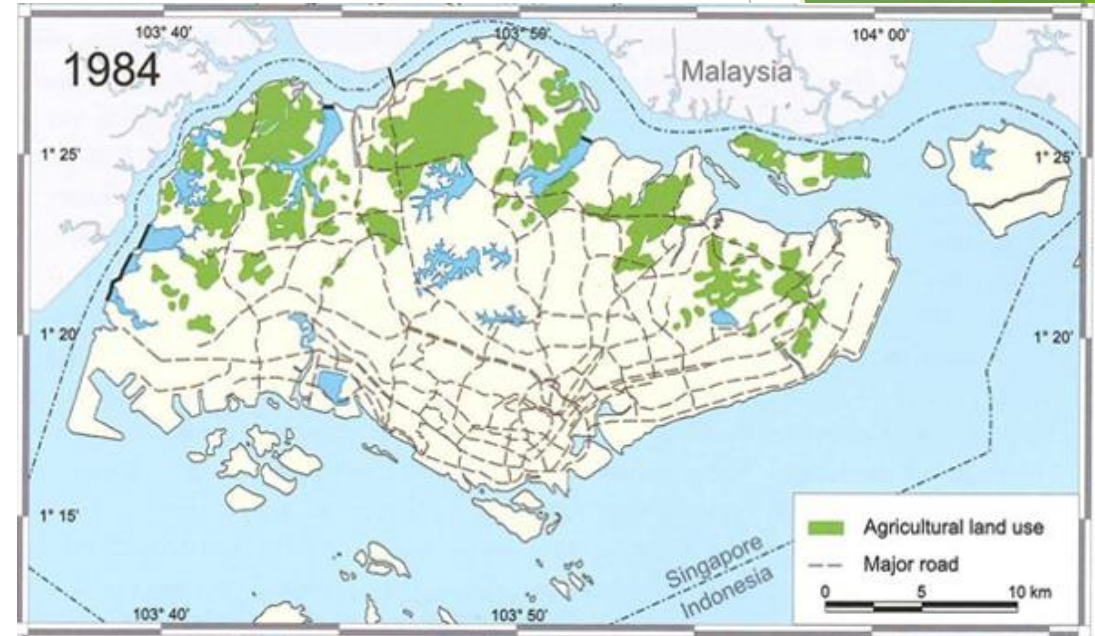




Farmlands 1960

## Resettlement of Farmers and the rural population 1960-1980

- ▶ From 1975 to 1984, the farm area fell from 10,500 ha to 5,800 ha and the number of licensed farms fell from 15,600 to 7,900 farms.
- ▶ The farms gave way to water conservation in catchment areas, public housing estates, industrial estates, roads and other public facilities.



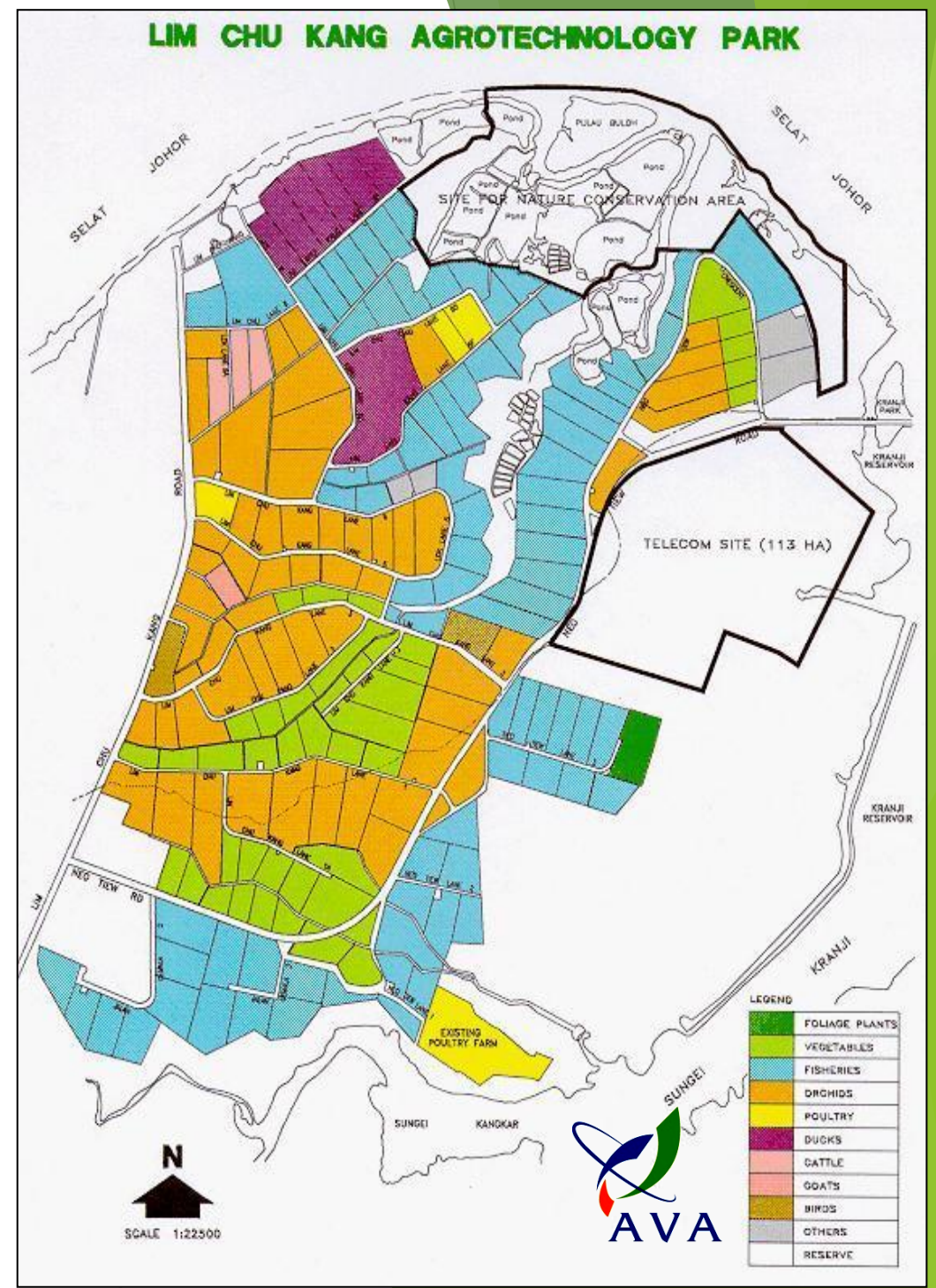
FARMLANDS 1984



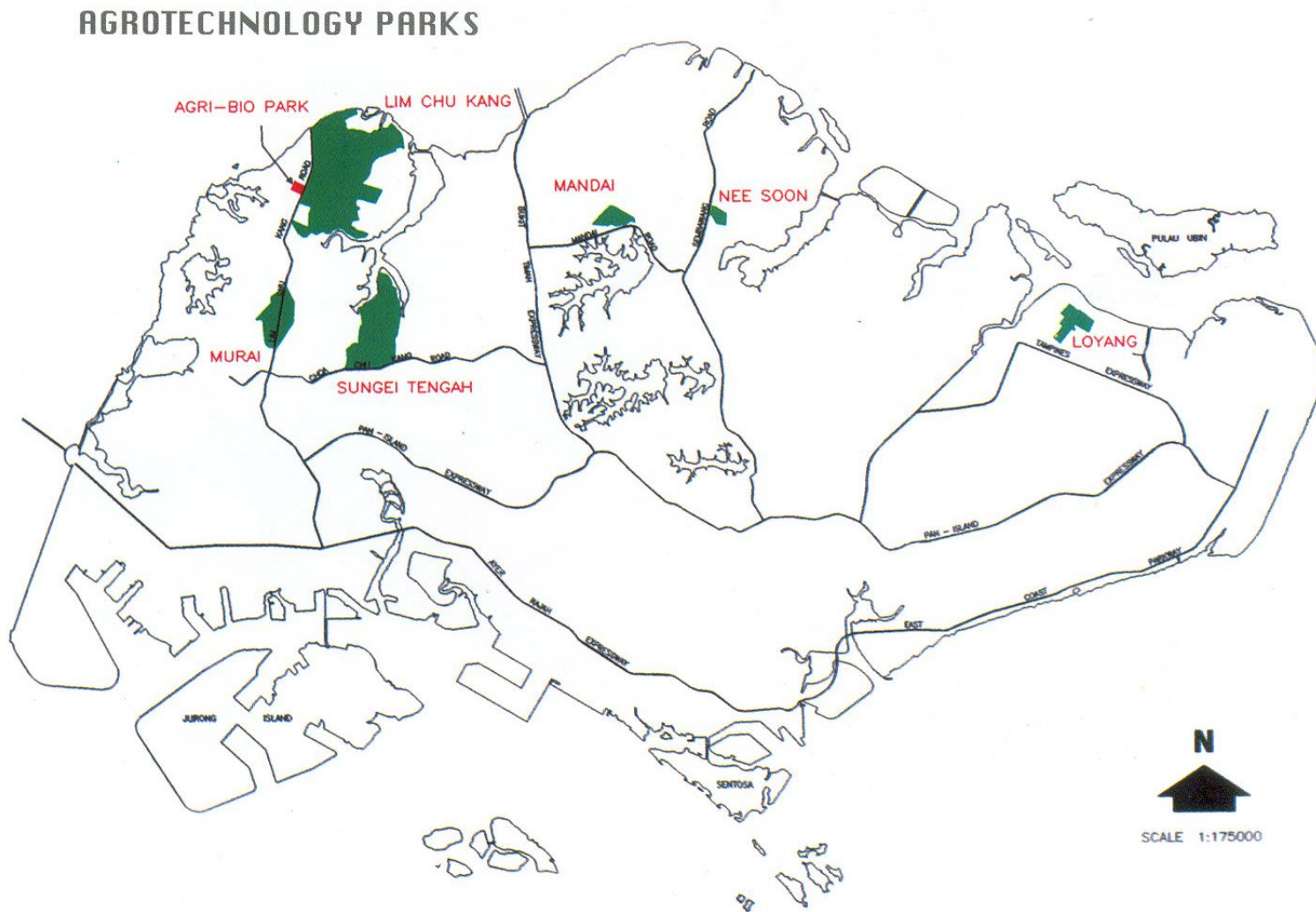
# AGROTECHNOLOGY PARKS CONCEPT

- Application of appropriate technology
- Sustainable ecosystem
- Modern farming systems
- Good farm management practices
- High quality farm produce
- High productivity
- 20 year lease
- Land rental - market rate

Source: AVA



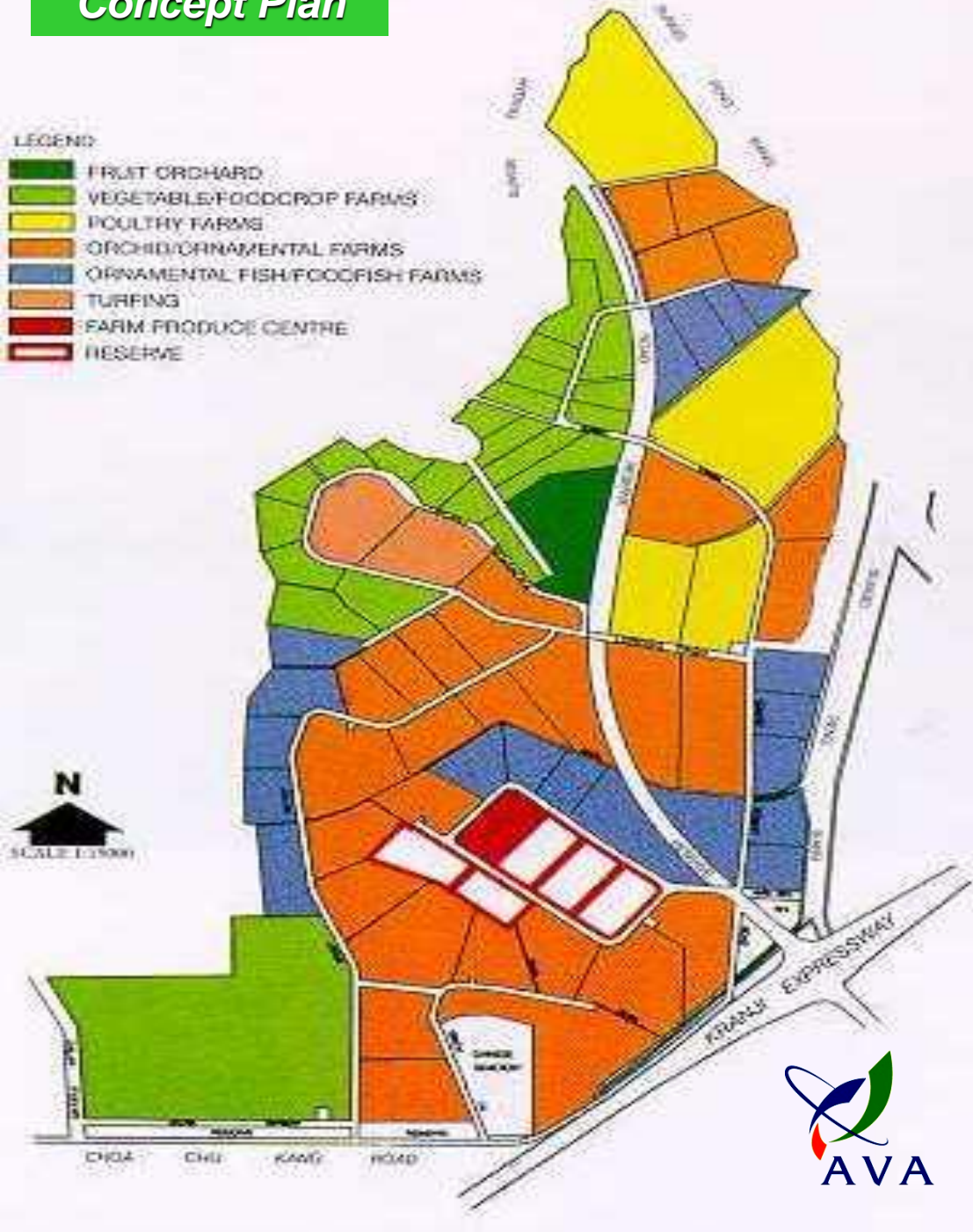
# AGROTECHNOLOGY PARKS



- Local farms produce a measure of our food supply, reducing reliance on other countries
- Local farm produce serve as benchmark for safety and quality for imported farm produce



# Concept Plan



# SUNGEI TENGAH AGROTECH PARK

## Aerial View





# Kok Fah Vegetable Farm







Protected Cultivation



# SkyGreens Vertical Vegetable Farm, Farming in the third dimension






- ▶ A Hydraulic Wheel drives the planter boxes to revolve around a 9 meter high A Frame structure.







## VFS system by numbers

5. 5 sqm tower footprint

2500 plants per 9m tower

454 plants per sqm

40 watt hour per tower

12L of water/kg of vegetables



# Sky Greens Vertical Farming System



Easy transplanting, harvesting, weighing & packing in a production line manner



Efficient delivery and cold chain management

**STREAM-  
LINE  
Operations**





# Key Economics

**10x**   
**More Yield**

Up to 10x more output compared to average farm output in Singapore of 90 tonne per ha per year

**95%**   
**Less Water**

Uses only 12 litres of water to produce 1 kg of vegetables and no wastage due to run off

**5¢**   
**Elec Cost /Kg**

Cost of electricity per kg of vegetables produced is \$0.05 for Vertical farming solution

**75%**   
**Less Labour**

Use less than half the labour of traditional farming to produce the same output

**75%**   
**Less Input**

Plant requirements are calculated and there is no wastage due to water run off





SINGAPORE'S  
Vertical Farm

Sky Purple Cai Xin  
天鲜紫菜心

Contains Vitamin C & E



- ✓ Freshly Harvested Daily
- ✓ Vitamin E is an anti oxidant that helps protect cells in the body
- ✓ Product of Singapore

Sky Greens Pte Ltd, 200 Lim... weight: 150g (when packed)  
... Lane 3, Singapore 718804. Website: [www.skygreens.com](http://www.skygreens.com)



# Winner of INDEX Award 2015, the largest design award in the world



**INDEX**  
DESIGN  
TO IMPROVE  
LIFE®





# Agripolis Vision







- ▶ Satellite Farms in other countries

- ▶ 1. Linshui, Hainan, China

- ▶ 2. Cixi, Ningbo, China

- ▶ 3. Cameron Highlands, Malaysia

- ▶ 4. Tahiti

- ▶ Interest from other countries

- ▶ Middle East Countries

- ▶ Hawaii



Cixi Farm





# Cixi Farm





# Aeroponics is

1. A modified hydroponic culture
2. Roots are suspended in the air (usually from styrofoam planks) within an enclosed chamber, in which nutrient is fed in the form of mist
3. Growing plants in the air





Roots suspended in air



03/19/2009 01:56 PM



# Butterhead Lettuce





## Aeroponics vertical planter boxes





## LED lighting







(Photo: Panasonic Factory Solutions Asia Pacific)

## Indoor Factory Farm





ENF Indoor Farm



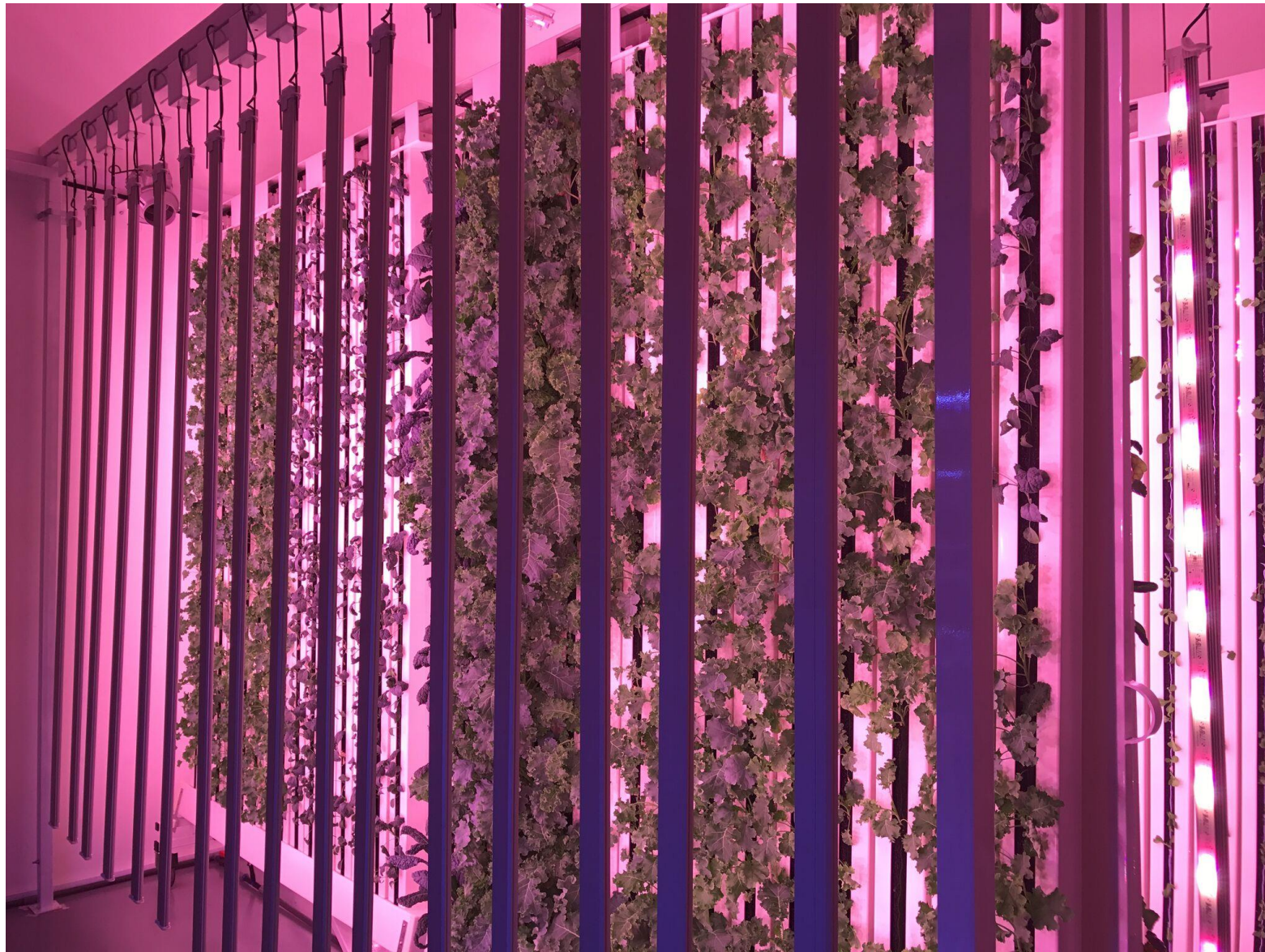
LETTUCE GROWN INDOOR



PLANTER BOXES IN FACTORY FARM



## Archisen Vertical Indoor Factory Farm





A wall of vegetables





## Kale produced in Archisen Indoor Farm





## New generation farmers and agripreneurs







## Concluding remarks

Vertical Vegetable Farming has the potential for a tenfold increase in production on a hectare of farmland. Inputs has been minimised with use of less water and energy. Ergonomic design with planter boxes rotating around a 9 meter high A Frame automates the production process and minimises the manual nature of farm work.

The development of precision farming technology especially in factory farms makes it possible for the production of high value crops with functional properties.

Vertical Vegetable Farming is well suited for farming in Peri-urban and Urban areas to provide a more resilient supply of food to cities which are expanding rapidly.

A new generation of farmers are attracted to Vertical Farming as it minimises the menial and manual work and is more like a factory.



**THANK YOU!**